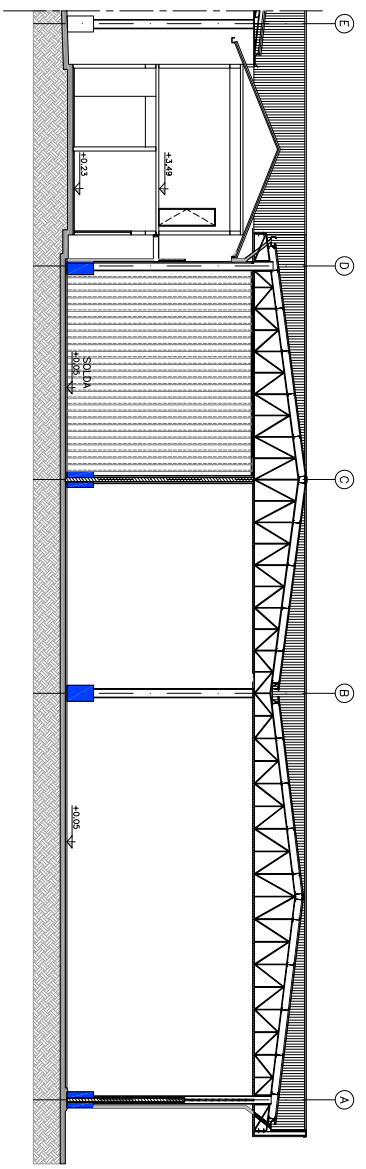
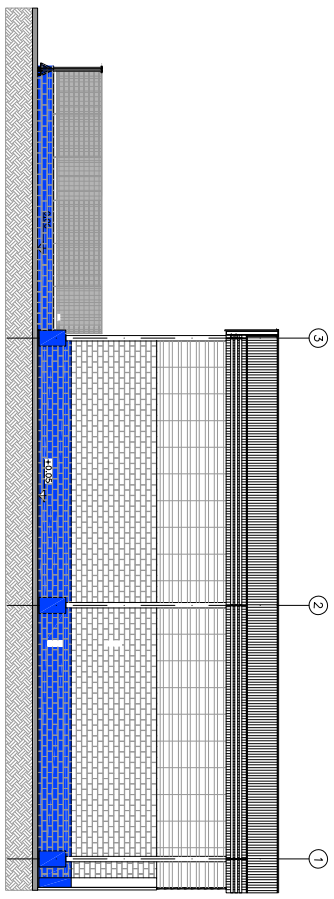


**1** CORTE AA  
ESCALA 1:100

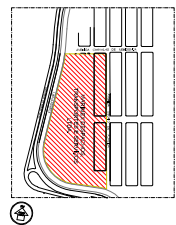


**2** CORTE BB  
ESCALA 1:100

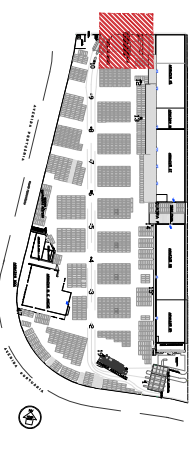


**3** CORTE CC  
ESCALA 1:100

SITUAÇÃO SEM ESCALA



PLANTA CHAVE



**MARINEX**  
ARQUITECTURA PORTUGUESA  
SANTOS - SP  
INSTAÇÕES PORTUGUESAS ALTERNATIVAS

OPIGNIA - CORTES  
TERMINAL 2

REVISÃO | DATA | AUTORIZAÇÃO

|   |                           |       |
|---|---------------------------|-------|
| RESPOSTA TÉCNICA                              | LOCAL                     | DATA  |
| <i>[Signature]</i>                            | AV. OSÓRIO DE ALMEIDA S/N | 18/21 |
| OPICE - 30833-418                             | PRATO DE SANTOS           |       |
| INTERESSADO                                   | ESCALA                    |       |
| MARINEX                                       | 1:100                     |       |
| INTERVENÇÃO                                   |                           |       |
| ARQUITECTURA PORTUGUESA EM LOGÍSTICA INTEGRAL |                           |       |