

Data: 09/12/2022  
Empresa avaliada: Fassina

Empresa avaliadora: RMX Engenharia  
Realizado por: Rodrigo K C Magário

**Pontos de medição**

Evento	Nome	L [dB] Aeq	L [dB] AFmax	L [dB] Cpeak
1	Ensaio04	74,73	93,67	109,14

**Calibração de laboratório**

Sonômetro: CRS0692/2022 16/02/2022  
Calibrador de áudio: CRS0693/2022

**Observações**

Ponto 4 - Frente da Empresa - Lado Externo

---

Rodrigo K C Magário  
Registro: 5069689512

**Configurações**

Evento: 1	Tarefa: Ensaio04
Tempo de amostragem [s]: 1	Duração: 00:10:03
Hora de início: 16:46:51	Tempo em pausa: 00:00:00
Hora de término: 16:56:53	Análise de oitavas: 1/3

**Verificação de campo @ 1kHz**

Pré verificação [dB]: 114,00 (09/12/2022 16:46)
Pós verificação [dB]: 113,95 (09/12/2022 16:57)
Desvio [dB]: 00,05

**Resultados**

L [dB]: 86,03 Zeq	L [dB]: 113,83 ZE	L [dB]: 109,49 Zpeak
L [dB]: 84,39 Ceq	L [dB]: 112,20 CE	L [dB]: 109,14 Cpeak
L [dB]: 74,73 Aeq	L [dB]: 102,54 AE	L [dB]: 106,28 Apeak

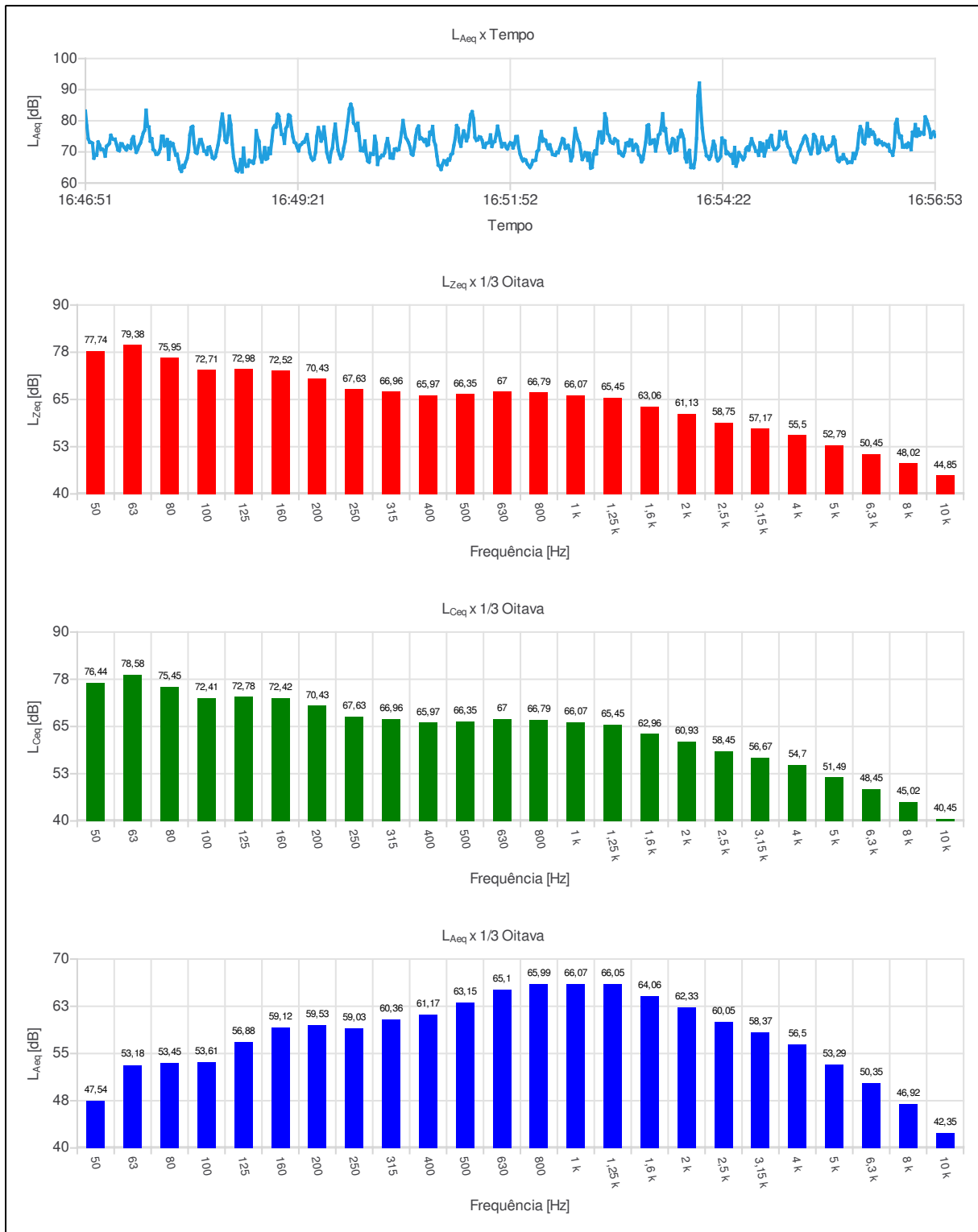
**Máx/Min**

L [dB]: 74,14 Zlmin	L [dB]: 100,01 Zlmax	L [dB]: 76,34 ZFmin	L [dB]: 97,69 ZFmax	L [dB]: 78,26 ZSmin	L [dB]: 94,37 ZSmax
L [dB]: 71,32 Clmin	L [dB]: 97,95 Clmax	L [dB]: 74,45 CFmin	L [dB]: 97,37 CFmax	L [dB]: 76,32 CSmin	L [dB]: 94,05 CSmax
L [dB]: 62,06 Almin	L [dB]: 94,24 Almax	L [dB]: 62,59 AFmin	L [dB]: 93,67 AFmax	L [dB]: 64,43 ASmin	L [dB]: 90,81 ASmax

**Estatísticos**

Ponderação em frequência: A					
Ponderação de tempo: Rápida (F)					
L [dB]: 79,75 05	L [dB]: 78,30 10	L [dB]: 71,94 50	L [dB]: 66,28 90	L [dB]: 65,43 95	

**Gráficos**



Ind	D/H	L <sub>Aeq,1s</sub> [dB]	Ind	D/H	L <sub>Aeq,1s</sub> [dB]	Ind	D/H	L <sub>Aeq,1s</sub> [dB]	Ind	D/H	L <sub>Aeq,1s</sub> [dB]
001	16:46:51	83,12	055	16:47:45	75,05	109	16:48:39	63,73	163	16:49:33	67,75
002	16:46:52	78,29	056	16:47:46	74,98	110	16:48:40	64,51	164	16:49:34	69,83
003	16:46:53	74,23	057	16:47:47	71,95	111	16:48:41	67,55	165	16:49:35	74,99
004	16:46:54	73,14	058	16:47:48	72,41	112	16:48:42	63,60	166	16:49:36	77,78
005	16:46:55	73,06	059	16:47:49	73,94	113	16:48:43	71,23	167	16:49:37	76,19
006	16:46:56	72,74	060	16:47:50	67,61	114	16:48:44	66,11	168	16:49:38	73,50
007	16:46:57	68,00	061	16:47:51	73,03	115	16:48:45	65,38	169	16:49:39	74,41
008	16:46:58	69,14	062	16:47:52	72,11	116	16:48:46	65,47	170	16:49:40	77,98
009	16:46:59	68,98	063	16:47:53	72,61	117	16:48:47	67,29	171	16:49:41	74,20
010	16:47:00	73,17	064	16:47:54	70,72	118	16:48:48	66,83	172	16:49:42	69,86
011	16:47:01	72,23	065	16:47:55	69,00	119	16:48:49	66,92	173	16:49:43	68,09
012	16:47:02	70,79	066	16:47:56	69,20	120	16:48:50	66,37	174	16:49:44	66,77
013	16:47:03	70,85	067	16:47:57	66,75	121	16:48:51	68,36	175	16:49:45	69,93
014	16:47:04	70,47	068	16:47:58	64,51	122	16:48:52	76,82	176	16:49:46	71,27
015	16:47:05	68,64	069	16:47:59	63,75	123	16:48:53	74,49	177	16:49:47	75,53
016	16:47:06	71,79	070	16:48:00	65,61	124	16:48:54	73,37	178	16:49:48	78,91
017	16:47:07	72,22	071	16:48:01	65,07	125	16:48:55	68,45	179	16:49:49	74,45
018	16:47:08	72,76	072	16:48:02	66,65	126	16:48:56	66,77	180	16:49:50	70,57
019	16:47:09	75,33	073	16:48:03	67,84	127	16:48:57	68,37	181	16:49:51	69,14
020	16:47:10	74,33	074	16:48:04	70,22	128	16:48:58	71,34	182	16:49:52	67,86
021	16:47:11	74,05	075	16:48:05	75,50	129	16:48:59	67,68	183	16:49:53	68,65
022	16:47:12	74,07	076	16:48:06	77,85	130	16:49:00	67,98	184	16:49:54	71,28
023	16:47:13	72,44	077	16:48:07	78,17	131	16:49:01	71,17	185	16:49:55	73,31
024	16:47:14	70,68	078	16:48:08	72,76	132	16:49:02	69,46	186	16:49:56	76,79
025	16:47:15	70,40	079	16:48:09	69,93	133	16:49:03	73,40	187	16:49:57	80,05
026	16:47:16	72,61	080	16:48:10	69,57	134	16:49:04	77,50	188	16:49:58	83,83
027	16:47:17	72,53	081	16:48:11	71,79	135	16:49:05	78,38	189	16:49:59	85,28
028	16:47:18	71,75	082	16:48:12	73,87	136	16:49:06	77,98	190	16:50:00	83,87
029	16:47:19	71,18	083	16:48:13	73,95	137	16:49:07	82,10	191	16:50:01	79,33
030	16:47:20	70,65	084	16:48:14	72,31	138	16:49:08	81,49	192	16:50:02	78,69
031	16:47:21	71,99	085	16:48:15	70,30	139	16:49:09	78,61	193	16:50:03	76,91
032	16:47:22	71,52	086	16:48:16	70,17	140	16:49:10	75,64	194	16:50:04	79,21
033	16:47:23	71,15	087	16:48:17	69,23	141	16:49:11	75,53	195	16:50:05	74,79
034	16:47:24	74,06	088	16:48:18	71,40	142	16:49:12	72,75	196	16:50:06	70,47
035	16:47:25	74,85	089	16:48:19	71,58	143	16:49:13	77,51	197	16:50:07	71,08
036	16:47:26	72,00	090	16:48:20	70,05	144	16:49:14	78,30	198	16:50:08	70,35
037	16:47:27	69,89	091	16:48:21	68,17	145	16:49:15	81,87	199	16:50:09	73,53
038	16:47:28	70,73	092	16:48:22	67,84	146	16:49:16	81,46	200	16:50:10	69,29
039	16:47:29	72,02	093	16:48:23	68,39	147	16:49:17	77,60	201	16:50:11	67,11
040	16:47:30	72,84	094	16:48:24	70,29	148	16:49:18	74,87	202	16:50:12	66,73
041	16:47:31	74,45	095	16:48:25	72,38	149	16:49:19	73,14	203	16:50:13	69,46
042	16:47:32	76,09	096	16:48:26	75,24	150	16:49:20	72,75	204	16:50:14	69,36
043	16:47:33	77,01	097	16:48:27	79,39	151	16:49:21	71,50	205	16:50:15	69,21
044	16:47:34	83,40	098	16:48:28	82,14	152	16:49:22	70,36	206	16:50:16	74,99
045	16:47:35	78,20	099	16:48:29	78,38	153	16:49:23	72,19	207	16:50:17	72,78
046	16:47:36	78,02	100	16:48:30	73,72	154	16:49:24	72,44	208	16:50:18	65,97
047	16:47:37	73,45	101	16:48:31	73,08	155	16:49:25	73,05	209	16:50:19	68,23
048	16:47:38	74,25	102	16:48:32	75,68	156	16:49:26	73,15	210	16:50:20	68,22
049	16:47:39	70,80	103	16:48:33	81,47	157	16:49:27	74,25	211	16:50:21	68,88
050	16:47:40	70,38	104	16:48:34	78,73	158	16:49:28	75,55	212	16:50:22	68,84
051	16:47:41	69,26	105	16:48:35	72,53	159	16:49:29	72,55	213	16:50:23	69,75
052	16:47:42	69,29	106	16:48:36	68,14	160	16:49:30	69,59	214	16:50:24	72,24
053	16:47:43	69,83	107	16:48:37	66,15	161	16:49:31	68,08	215	16:50:25	74,25
054	16:47:44	71,12	108	16:48:38	64,05	162	16:49:32	67,38	216	16:50:26	71,80

Ind	D/H	L <sub>Aeq,1s</sub> [dB]	Ind	D/H	L <sub>Aeq,1s</sub> [dB]	Ind	D/H	L <sub>Aeq,1s</sub> [dB]	Ind	D/H	L <sub>Aeq,1s</sub> [dB]
217	16:50:27	68,09	271	16:51:21	73,58	325	16:52:15	73,48	379	16:53:09	69,68
218	16:50:28	69,24	272	16:51:22	74,84	326	16:52:16	74,00	380	16:53:10	69,94
219	16:50:29	67,99	273	16:51:23	78,60	327	16:52:17	73,72	381	16:53:11	69,05
220	16:50:30	70,85	274	16:51:24	81,95	328	16:52:18	72,11	382	16:53:12	68,69
221	16:50:31	70,97	275	16:51:25	82,91	329	16:52:19	71,04	383	16:53:13	70,01
222	16:50:32	70,55	276	16:51:26	80,63	330	16:52:20	72,26	384	16:53:14	72,74
223	16:50:33	70,77	277	16:51:27	74,61	331	16:52:21	70,62	385	16:53:15	72,95
224	16:50:34	73,26	278	16:51:28	73,72	332	16:52:22	69,21	386	16:53:16	72,00
225	16:50:35	76,23	279	16:51:29	73,91	333	16:52:23	69,03	387	16:53:17	73,87
226	16:50:36	80,06	280	16:51:30	74,82	334	16:52:24	68,94	388	16:53:18	73,78
227	16:50:37	77,05	281	16:51:31	74,66	335	16:52:25	69,89	389	16:53:19	70,53
228	16:50:38	74,59	282	16:51:32	73,75	336	16:52:26	69,79	390	16:53:20	71,61
229	16:50:39	73,88	283	16:51:33	71,59	337	16:52:27	71,14	391	16:53:21	72,39
230	16:50:40	72,88	284	16:51:34	71,46	338	16:52:28	72,60	392	16:53:22	71,69
231	16:50:41	71,51	285	16:51:35	72,76	339	16:52:29	74,26	393	16:53:23	69,14
232	16:50:42	69,39	286	16:51:36	72,88	340	16:52:30	73,92	394	16:53:24	68,67
233	16:50:43	69,01	287	16:51:37	73,00	341	16:52:31	71,15	395	16:53:25	66,82
234	16:50:44	71,39	288	16:51:38	75,43	342	16:52:32	71,49	396	16:53:26	67,63
235	16:50:45	75,04	289	16:51:39	71,77	343	16:52:33	72,07	397	16:53:27	70,50
236	16:50:46	77,41	290	16:51:40	73,09	344	16:52:34	70,42	398	16:53:28	73,24
237	16:50:47	78,28	291	16:51:41	73,34	345	16:52:35	67,20	399	16:53:29	78,36
238	16:50:48	74,22	292	16:51:42	75,40	346	16:52:36	68,54	400	16:53:30	78,67
239	16:50:49	74,43	293	16:51:43	78,24	347	16:52:37	73,01	401	16:53:31	72,62
240	16:50:50	74,06	294	16:51:44	76,11	348	16:52:38	77,48	402	16:53:32	72,84
241	16:50:51	73,35	295	16:51:45	73,82	349	16:52:39	75,45	403	16:53:33	73,73
242	16:50:52	73,96	296	16:51:46	71,67	350	16:52:40	73,86	404	16:53:34	73,85
243	16:50:53	72,13	297	16:51:47	72,65	351	16:52:41	72,88	405	16:53:35	70,32
244	16:50:54	72,41	298	16:51:48	72,65	352	16:52:42	70,25	406	16:53:36	72,83
245	16:50:55	76,30	299	16:51:49	71,54	353	16:52:43	67,57	407	16:53:37	75,40
246	16:50:56	75,70	300	16:51:50	70,98	354	16:52:44	68,46	408	16:53:38	75,83
247	16:50:57	78,16	301	16:51:51	72,18	355	16:52:45	69,76	409	16:53:39	78,19
248	16:50:58	73,52	302	16:51:52	72,93	356	16:52:46	69,65	410	16:53:40	82,25
249	16:50:59	72,15	303	16:51:53	72,74	357	16:52:47	67,28	411	16:53:41	76,85
250	16:51:00	68,77	304	16:51:54	71,27	358	16:52:48	69,52	412	16:53:42	77,49
251	16:51:01	65,76	305	16:51:55	72,56	359	16:52:49	64,80	413	16:53:43	72,75
252	16:51:02	65,36	306	16:51:56	74,88	360	16:52:50	65,07	414	16:53:44	70,66
253	16:51:03	64,38	307	16:51:57	74,93	361	16:52:51	69,23	415	16:53:45	69,72
254	16:51:04	66,02	308	16:51:58	71,43	362	16:52:52	70,30	416	16:53:46	72,03
255	16:51:05	67,15	309	16:51:59	69,25	363	16:52:53	69,36	417	16:53:47	74,22
256	16:51:06	67,06	310	16:52:00	68,02	364	16:52:54	73,90	418	16:53:48	73,82
257	16:51:07	65,95	311	16:52:01	67,12	365	16:52:55	76,40	419	16:53:49	70,38
258	16:51:08	67,62	312	16:52:02	67,58	366	16:52:56	76,42	420	16:53:50	70,61
259	16:51:09	67,40	313	16:52:03	67,36	367	16:52:57	72,93	421	16:53:51	74,65
260	16:51:10	69,11	314	16:52:04	66,23	368	16:52:58	73,88	422	16:53:52	74,87
261	16:51:11	69,49	315	16:52:05	65,63	369	16:52:59	82,22	423	16:53:53	76,93
262	16:51:12	71,98	316	16:52:06	65,02	370	16:53:00	80,71	424	16:53:54	75,63
263	16:51:13	74,27	317	16:52:07	65,83	371	16:53:01	75,90	425	16:53:55	74,01
264	16:51:14	78,44	318	16:52:08	67,19	372	16:53:02	75,24	426	16:53:56	68,05
265	16:51:15	77,59	319	16:52:09	67,21	373	16:53:03	73,45	427	16:53:57	66,78
266	16:51:16	73,46	320	16:52:10	67,38	374	16:53:04	72,98	428	16:53:58	69,62
267	16:51:17	71,85	321	16:52:11	70,09	375	16:53:05	72,75	429	16:53:59	70,47
268	16:51:18	74,81	322	16:52:12	70,65	376	16:53:06	74,19	430	16:54:00	64,99
269	16:51:19	76,72	323	16:52:13	74,44	377	16:53:07	73,78	431	16:54:01	65,69
270	16:51:20	75,30	324	16:52:14	76,53	378	16:53:08	73,42	432	16:54:02	64,93

Ind	D/H	L <sub>Aeq,1s</sub> [dB]	Ind	D/H	L <sub>Aeq,1s</sub> [dB]	Ind	D/H	L <sub>Aeq,1s</sub> [dB]	Ind	D/H	L <sub>Aeq,1s</sub> [dB]
433	16:54:03	67,69	487	16:54:57	75,26	541	16:55:51	66,47	595	16:56:45	75,71
434	16:54:04	74,32	488	16:54:58	71,92	542	16:55:52	66,69	596	16:56:46	81,23
435	16:54:05	88,01	489	16:54:59	70,84	543	16:55:53	66,76	597	16:56:47	80,28
436	16:54:06	92,10	490	16:55:00	70,86	544	16:55:54	66,63	598	16:56:48	78,80
437	16:54:07	83,95	491	16:55:01	71,25	545	16:55:55	69,48	599	16:56:49	77,26
438	16:54:08	77,59	492	16:55:02	71,86	546	16:55:56	67,89	600	16:56:50	74,65
439	16:54:09	73,61	493	16:55:03	76,53	547	16:55:57	69,34	601	16:56:51	75,82
440	16:54:10	71,48	494	16:55:04	74,56	548	16:55:58	71,09	602	16:56:52	76,43
441	16:54:11	68,82	495	16:55:05	74,08	549	16:55:59	75,75	603	16:56:53	74,95
442	16:54:12	68,45	496	16:55:06	74,53	550	16:56:00	78,11			
443	16:54:13	67,67	497	16:55:07	76,37	551	16:56:01	76,95			
444	16:54:14	68,63	498	16:55:08	72,95	552	16:56:02	73,16			
445	16:54:15	70,98	499	16:55:09	71,62	553	16:56:03	72,65			
446	16:54:16	73,38	500	16:55:10	71,01	554	16:56:04	75,71			
447	16:54:17	72,05	501	16:55:11	69,05	555	16:56:05	79,11			
448	16:54:18	68,41	502	16:55:12	68,30	556	16:56:06	75,05			
449	16:54:19	67,16	503	16:55:13	66,84	557	16:56:07	77,08			
450	16:54:20	67,70	504	16:55:14	66,63	558	16:56:08	75,75			
451	16:54:21	68,54	505	16:55:15	67,70	559	16:56:09	76,36			
452	16:54:22	74,41	506	16:55:16	69,84	560	16:56:10	75,41			
453	16:54:23	73,01	507	16:55:17	70,58	561	16:56:11	72,86			
454	16:54:24	73,54	508	16:55:18	72,03	562	16:56:12	72,45			
455	16:54:25	69,48	509	16:55:19	72,95	563	16:56:13	73,82			
456	16:54:26	69,87	510	16:55:20	74,42	564	16:56:14	73,08			
457	16:54:27	69,29	511	16:55:21	75,11	565	16:56:15	73,16			
458	16:54:28	68,71	512	16:55:22	74,30	566	16:56:16	72,23			
459	16:54:29	69,16	513	16:55:23	72,08	567	16:56:17	72,64			
460	16:54:30	66,36	514	16:55:24	70,52	568	16:56:18	72,38			
461	16:54:31	71,42	515	16:55:25	69,38	569	16:56:19	71,80			
462	16:54:32	65,44	516	16:55:26	71,28	570	16:56:20	72,28			
463	16:54:33	67,00	517	16:55:27	75,55	571	16:56:21	70,27			
464	16:54:34	69,75	518	16:55:28	74,95	572	16:56:22	70,03			
465	16:54:35	68,94	519	16:55:29	73,52	573	16:56:23	68,93			
466	16:54:36	68,34	520	16:55:30	69,59	574	16:56:24	71,61			
467	16:54:37	67,53	521	16:55:31	69,98	575	16:56:25	79,06			
468	16:54:38	68,31	522	16:55:32	72,47	576	16:56:26	80,40			
469	16:54:39	70,91	523	16:55:33	74,69	577	16:56:27	76,34			
470	16:54:40	71,52	524	16:55:34	72,65	578	16:56:28	74,61			
471	16:54:41	70,61	525	16:55:35	71,22	579	16:56:29	75,07			
472	16:54:42	72,36	526	16:55:36	70,58	580	16:56:30	71,58			
473	16:54:43	74,21	527	16:55:37	70,77	581	16:56:31	71,58			
474	16:54:44	72,69	528	16:55:38	71,88	582	16:56:32	72,20			
475	16:54:45	71,67	529	16:55:39	71,94	583	16:56:33	71,52			
476	16:54:46	70,21	530	16:55:40	72,59	584	16:56:34	72,79			
477	16:54:47	70,22	531	16:55:41	74,76	585	16:56:35	72,26			
478	16:54:48	68,89	532	16:55:42	73,76	586	16:56:36	70,73			
479	16:54:49	72,91	533	16:55:43	70,02	587	16:56:37	76,30			
480	16:54:50	70,32	534	16:55:44	67,41	588	16:56:38	75,29			
481	16:54:51	72,56	535	16:55:45	66,92	589	16:56:39	78,77			
482	16:54:52	68,72	536	16:55:46	68,09	590	16:56:40	75,05			
483	16:54:53	70,58	537	16:55:47	67,75	591	16:56:41	77,29			
484	16:54:54	73,43	538	16:55:48	69,14	592	16:56:42	75,45			
485	16:54:55	71,55	539	16:55:49	67,85	593	16:56:43	76,19			
486	16:54:56	74,28	540	16:55:50	67,55	594	16:56:44	76,12			