

Data: 09/12/2022
Empresa avaliada: Fassina

Empresa avaliadora: RMX Engenharia
Realizado por: Rodrigo K C Magário

Pontos de medição

Evento	Nome	L [dB] Aeq	L [dB] AFmax	L [dB] Cpeak
1	Ensaio03	67,84	86,57	100,27

Calibração de laboratório

Sonômetro: CRS0692/2022 16/02/2022
Calibrador de áudio: CRS0693/2022

Observações

Ponto 3 - Divisa da Empresa

Rodrigo K C Magário
Registro: 5069689512

Configurações

Evento: 1	Tarefa: Ensaio03
Tempo de amostragem [s]: 1	Duração: 00:10:04
Hora de início: 16:26:35	Tempo em pausa: 00:00:00
Hora de término: 16:36:37	Análise de oitavas: 1/3

Verificação de campo @ 1kHz

Pré verificação [dB]: 114,00 (09/12/2022 16:25)
 Pós verificação [dB]: 113,85 (09/12/2022 16:36)
 Desvio [dB]: 00,15

Resultados

L [dB]: 80,74 Z _{eq}	L [dB]: 108,55 Z _E	L [dB]: 101,17 Z _{peak}
L [dB]: 77,72 C _{eq}	L [dB]: 105,53 C _E	L [dB]: 100,27 C _{peak}
L [dB]: 67,84 A _{eq}	L [dB]: 95,65 A _E	L [dB]: 100,39 A _{peak}

Máx/Min

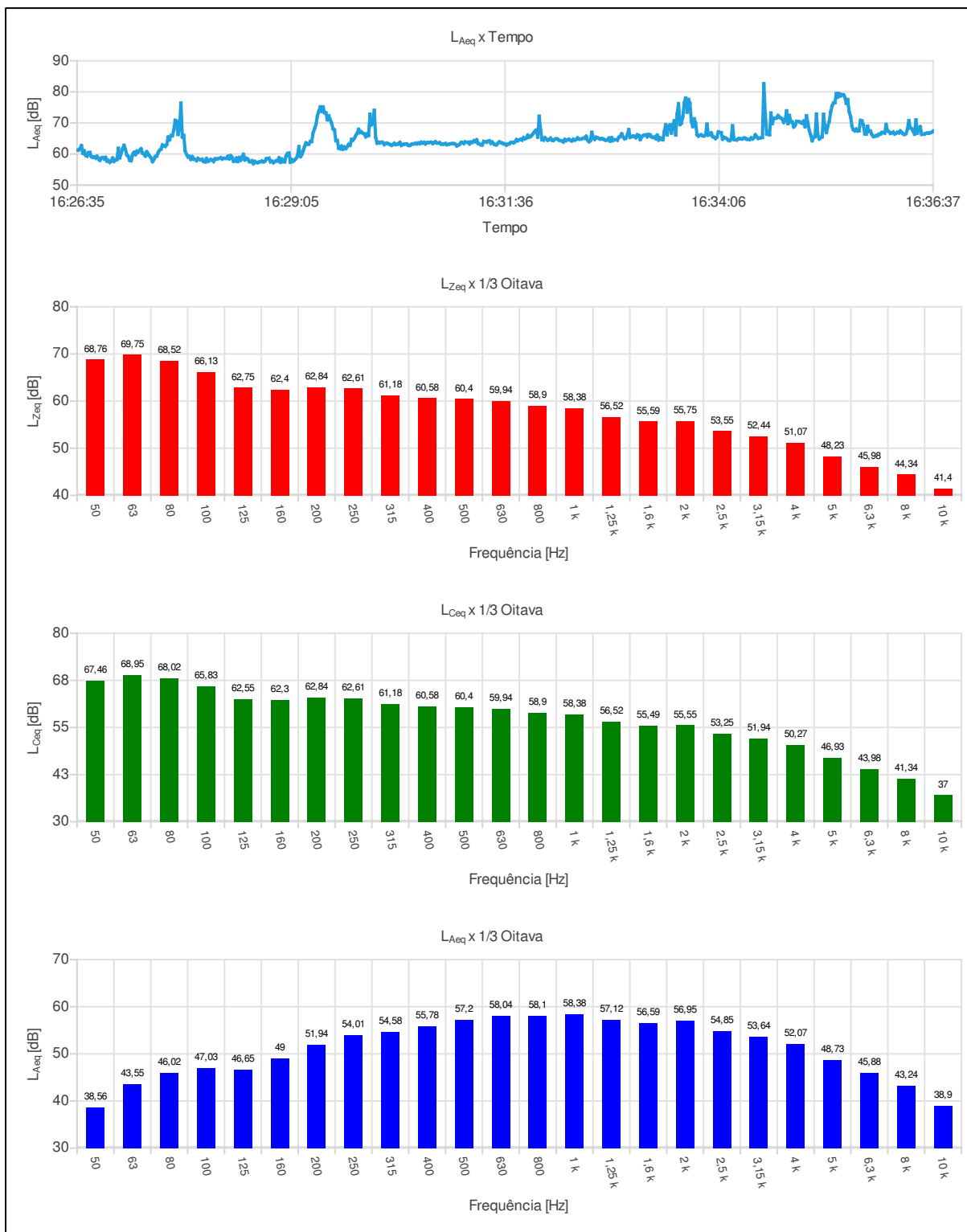
L [dB]: 69,41 Z _{lmin}	L [dB]: 93,09 Z _{lmax}	L [dB]: 71,97 Z _{Fmin}	L [dB]: 90,71 Z _{Fmax}	L [dB]: 74,71 Z _{Smin}	L [dB]: 88,40 Z _{Smax}
L [dB]: 66,24 C _{lmin}	L [dB]: 90,35 C _{lmax}	L [dB]: 68,23 C _{Fmin}	L [dB]: 88,91 C _{Fmax}	L [dB]: 71,07 C _{Smin}	L [dB]: 86,36 C _{Smax}
L [dB]: 55,68 A _{lmin}	L [dB]: 88,05 A _{lmax}	L [dB]: 56,21 A _{Fmin}	L [dB]: 86,57 A _{Fmax}	L [dB]: 57,18 A _{Smin}	L [dB]: 81,68 A _{Smax}

Estatísticos

Ponderação em frequência: A
 Ponderação de tempo: Rápida (F)

L [dB]: 73,72 05	L [dB]: 70,57 10	L [dB]: 64,10 50	L [dB]: 57,65 90	L [dB]: 56,33 95
---------------------	---------------------	---------------------	---------------------	---------------------

Gráficos



Ind	D/H	L _{Aeq,1s} [dB]	Ind	D/H	L _{Aeq,1s} [dB]	Ind	D/H	L _{Aeq,1s} [dB]	Ind	D/H	L _{Aeq,1s} [dB]
001	16:26:35	61,28	055	16:27:29	58,23	109	16:28:23	59,48	163	16:29:17	63,16
002	16:26:36	61,28	056	16:27:30	59,18	110	16:28:24	58,90	164	16:29:18	63,20
003	16:26:37	61,78	057	16:27:31	59,35	111	16:28:25	57,67	165	16:29:19	64,01
004	16:26:38	62,69	058	16:27:32	60,44	112	16:28:26	57,75	166	16:29:20	64,02
005	16:26:39	60,28	059	16:27:33	61,19	113	16:28:27	58,68	167	16:29:21	66,88
006	16:26:40	61,02	060	16:27:34	61,57	114	16:28:28	57,59	168	16:29:22	68,13
007	16:26:41	59,65	061	16:27:35	62,92	115	16:28:29	58,85	169	16:29:23	69,59
008	16:26:42	59,33	062	16:27:36	62,69	116	16:28:30	58,01	170	16:29:24	72,27
009	16:26:43	60,44	063	16:27:37	62,46	117	16:28:31	59,09	171	16:29:25	73,77
010	16:26:44	60,51	064	16:27:38	63,02	118	16:28:32	59,89	172	16:29:26	75,16
011	16:26:45	59,19	065	16:27:39	65,46	119	16:28:33	58,11	173	16:29:27	73,71
012	16:26:46	58,96	066	16:27:40	64,56	120	16:28:34	58,59	174	16:29:28	75,14
013	16:26:47	59,05	067	16:27:41	65,91	121	16:28:35	58,36	175	16:29:29	73,30
014	16:26:48	58,68	068	16:27:42	65,88	122	16:28:36	57,59	176	16:29:30	73,25
015	16:26:49	59,27	069	16:27:43	67,73	123	16:28:37	57,52	177	16:29:31	71,00
016	16:26:50	58,47	070	16:27:44	70,85	124	16:28:38	57,83	178	16:29:32	72,29
017	16:26:51	57,96	071	16:27:45	70,59	125	16:28:39	56,89	179	16:29:33	71,11
018	16:26:52	58,69	072	16:27:46	66,31	126	16:28:40	57,62	180	16:29:34	69,85
019	16:26:53	58,83	073	16:27:47	68,00	127	16:28:41	57,35	181	16:29:35	68,12
020	16:26:54	58,41	074	16:27:48	76,38	128	16:28:42	57,22	182	16:29:36	67,75
021	16:26:55	58,91	075	16:27:49	65,48	129	16:28:43	57,44	183	16:29:37	64,29
022	16:26:56	57,72	076	16:27:50	65,96	130	16:28:44	57,50	184	16:29:38	64,35
023	16:26:57	57,93	077	16:27:51	60,95	131	16:28:45	57,73	185	16:29:39	61,87
024	16:26:58	57,33	078	16:27:52	59,86	132	16:28:46	57,49	186	16:29:40	61,69
025	16:26:59	57,74	079	16:27:53	59,06	133	16:28:47	57,69	187	16:29:41	62,54
026	16:27:00	58,69	080	16:27:54	59,23	134	16:28:48	58,44	188	16:29:42	61,54
027	16:27:01	57,63	081	16:27:55	58,28	135	16:28:49	58,51	189	16:29:43	62,22
028	16:27:02	58,08	082	16:27:56	59,14	136	16:28:50	58,63	190	16:29:44	61,74
029	16:27:03	58,22	083	16:27:57	58,38	137	16:28:51	57,49	191	16:29:45	62,38
030	16:27:04	61,83	084	16:27:58	58,24	138	16:28:52	57,67	192	16:29:46	63,12
031	16:27:05	58,77	085	16:27:59	57,87	139	16:28:53	57,19	193	16:29:47	62,79
032	16:27:06	60,28	086	16:28:00	58,59	140	16:28:54	57,52	194	16:29:48	64,69
033	16:27:07	61,74	087	16:28:01	58,29	141	16:28:55	57,82	195	16:29:49	64,50
034	16:27:08	62,79	088	16:28:02	58,14	142	16:28:56	57,76	196	16:29:50	65,09
035	16:27:09	61,41	089	16:28:03	58,30	143	16:28:57	58,75	197	16:29:51	65,96
036	16:27:10	59,69	090	16:28:04	57,58	144	16:28:58	57,35	198	16:29:52	66,77
037	16:27:11	59,21	091	16:28:05	57,44	145	16:28:59	58,35	199	16:29:53	67,95
038	16:27:12	57,98	092	16:28:06	58,54	146	16:29:00	57,56	200	16:29:54	66,90
039	16:27:13	57,82	093	16:28:07	57,65	147	16:29:01	57,47	201	16:29:55	67,09
040	16:27:14	59,77	094	16:28:08	57,88	148	16:29:02	59,41	202	16:29:56	66,69
041	16:27:15	60,52	095	16:28:09	58,23	149	16:29:03	60,16	203	16:29:57	66,50
042	16:27:16	59,82	096	16:28:10	58,05	150	16:29:04	60,30	204	16:29:58	65,56
043	16:27:17	60,91	097	16:28:11	57,60	151	16:29:05	57,36	205	16:29:59	66,44
044	16:27:18	60,60	098	16:28:12	58,45	152	16:29:06	58,20	206	16:30:00	65,97
045	16:27:19	61,20	099	16:28:13	58,41	153	16:29:07	57,68	207	16:30:01	72,83
046	16:27:20	61,67	100	16:28:14	58,52	154	16:29:08	58,08	208	16:30:02	69,40
047	16:27:21	60,25	101	16:28:15	58,61	155	16:29:09	58,59	209	16:30:03	69,73
048	16:27:22	60,06	102	16:28:16	58,80	156	16:29:10	59,48	210	16:30:04	74,08
049	16:27:23	59,35	103	16:28:17	58,40	157	16:29:11	62,38	211	16:30:05	65,34
050	16:27:24	60,70	104	16:28:18	58,62	158	16:29:12	59,15	212	16:30:06	63,48
051	16:27:25	60,00	105	16:28:19	58,58	159	16:29:13	59,79	213	16:30:07	63,76
052	16:27:26	59,34	106	16:28:20	58,62	160	16:29:14	61,01	214	16:30:08	63,58
053	16:27:27	58,79	107	16:28:21	59,25	161	16:29:15	62,49	215	16:30:09	63,79
054	16:27:28	57,55	108	16:28:22	58,42	162	16:29:16	63,57	216	16:30:10	63,68

Ind	D/H	L _{Aeq,1s} [dB]	Ind	D/H	L _{Aeq,1s} [dB]	Ind	D/H	L _{Aeq,1s} [dB]	Ind	D/H	L _{Aeq,1s} [dB]
217	16:30:11	63,02	271	16:31:05	63,69	325	16:31:59	65,45	379	16:32:53	64,56
218	16:30:12	63,37	272	16:31:06	63,68	326	16:32:00	72,16	380	16:32:54	64,58
219	16:30:13	63,49	273	16:31:07	63,37	327	16:32:01	67,60	381	16:32:55	64,45
220	16:30:14	63,26	274	16:31:08	63,91	328	16:32:02	64,58	382	16:32:56	65,38
221	16:30:15	63,10	275	16:31:09	63,78	329	16:32:03	64,49	383	16:32:57	65,72
222	16:30:16	62,81	276	16:31:10	63,80	330	16:32:04	65,25	384	16:32:58	66,50
223	16:30:17	63,00	277	16:31:11	63,25	331	16:32:05	64,79	385	16:32:59	65,51
224	16:30:18	63,45	278	16:31:12	63,85	332	16:32:06	64,46	386	16:33:00	64,91
225	16:30:19	63,05	279	16:31:13	63,77	333	16:32:07	64,70	387	16:33:01	65,15
226	16:30:20	63,10	280	16:31:14	64,24	334	16:32:08	65,09	388	16:33:02	66,20
227	16:30:21	63,30	281	16:31:15	64,01	335	16:32:09	64,44	389	16:33:03	67,88
228	16:30:22	63,73	282	16:31:16	64,57	336	16:32:10	64,39	390	16:33:04	65,38
229	16:30:23	62,78	283	16:31:17	63,41	337	16:32:11	64,74	391	16:33:05	65,60
230	16:30:24	63,02	284	16:31:18	63,25	338	16:32:12	64,88	392	16:33:06	65,73
231	16:30:25	63,16	285	16:31:19	62,95	339	16:32:13	64,77	393	16:33:07	65,67
232	16:30:26	63,19	286	16:31:20	62,96	340	16:32:14	64,42	394	16:33:08	65,26
233	16:30:27	63,18	287	16:31:21	64,06	341	16:32:15	64,31	395	16:33:09	66,18
234	16:30:28	62,78	288	16:31:22	63,96	342	16:32:16	64,18	396	16:33:10	65,99
235	16:30:29	62,77	289	16:31:23	63,83	343	16:32:17	63,86	397	16:33:11	64,64
236	16:30:30	63,08	290	16:31:24	64,13	344	16:32:18	64,70	398	16:33:12	65,38
237	16:30:31	63,25	291	16:31:25	64,20	345	16:32:19	64,34	399	16:33:13	65,89
238	16:30:32	63,26	292	16:31:26	63,43	346	16:32:20	64,59	400	16:33:14	66,08
239	16:30:33	63,45	293	16:31:27	63,84	347	16:32:21	64,72	401	16:33:15	66,14
240	16:30:34	63,28	294	16:31:28	63,27	348	16:32:22	64,39	402	16:33:16	65,55
241	16:30:35	63,54	295	16:31:29	62,99	349	16:32:23	64,23	403	16:33:17	66,27
242	16:30:36	63,35	296	16:31:30	62,99	350	16:32:24	64,73	404	16:33:18	66,15
243	16:30:37	63,79	297	16:31:31	63,51	351	16:32:25	64,49	405	16:33:19	65,53
244	16:30:38	63,54	298	16:31:32	63,93	352	16:32:26	64,70	406	16:33:20	65,39
245	16:30:39	63,73	299	16:31:33	63,64	353	16:32:27	65,20	407	16:33:21	65,43
246	16:30:40	63,26	300	16:31:34	63,55	354	16:32:28	64,84	408	16:33:22	64,96
247	16:30:41	63,65	301	16:31:35	63,24	355	16:32:29	64,79	409	16:33:23	66,09
248	16:30:42	63,65	302	16:31:36	63,25	356	16:32:30	64,90	410	16:33:24	64,53
249	16:30:43	63,74	303	16:31:37	62,89	357	16:32:31	65,11	411	16:33:25	65,22
250	16:30:44	63,77	304	16:31:38	63,17	358	16:32:32	65,09	412	16:33:26	64,83
251	16:30:45	63,38	305	16:31:39	63,28	359	16:32:33	65,71	413	16:33:27	64,60
252	16:30:46	63,64	306	16:31:40	63,68	360	16:32:34	64,50	414	16:33:28	67,27
253	16:30:47	63,97	307	16:31:41	63,75	361	16:32:35	63,98	415	16:33:29	69,45
254	16:30:48	63,57	308	16:31:42	63,63	362	16:32:36	64,31	416	16:33:30	66,22
255	16:30:49	63,58	309	16:31:43	63,94	363	16:32:37	66,99	417	16:33:31	68,82
256	16:30:50	63,65	310	16:31:44	64,63	364	16:32:38	65,32	418	16:33:32	69,37
257	16:30:51	63,20	311	16:31:45	64,33	365	16:32:39	64,70	419	16:33:33	66,75
258	16:30:52	63,17	312	16:31:46	64,54	366	16:32:40	65,39	420	16:33:34	69,37
259	16:30:53	63,20	313	16:31:47	64,75	367	16:32:41	65,27	421	16:33:35	70,70
260	16:30:54	63,38	314	16:31:48	64,49	368	16:32:42	65,02	422	16:33:36	66,13
261	16:30:55	63,02	315	16:31:49	65,29	369	16:32:43	64,82	423	16:33:37	72,87
262	16:30:56	63,12	316	16:31:50	64,91	370	16:32:44	64,95	424	16:33:38	76,23
263	16:30:57	63,22	317	16:31:51	65,15	371	16:32:45	64,86	425	16:33:39	69,49
264	16:30:58	63,31	318	16:31:52	66,04	372	16:32:46	64,54	426	16:33:40	69,92
265	16:30:59	63,35	319	16:31:53	65,46	373	16:32:47	64,46	427	16:33:41	71,91
266	16:31:00	63,33	320	16:31:54	65,66	374	16:32:48	64,58	428	16:33:42	76,42
267	16:31:01	63,16	321	16:31:55	66,15	375	16:32:49	65,11	429	16:33:43	78,01
268	16:31:02	62,60	322	16:31:56	66,74	376	16:32:50	64,13	430	16:33:44	73,49
269	16:31:03	62,83	323	16:31:57	67,33	377	16:32:51	65,26	431	16:33:45	77,55
270	16:31:04	63,10	324	16:31:58	67,71	378	16:32:52	64,36	432	16:33:46	76,37

Ind	D/H	L _{Aeq,1s} [dB]	Ind	D/H	L _{Aeq,1s} [dB]	Ind	D/H	L _{Aeq,1s} [dB]	Ind	D/H	L _{Aeq,1s} [dB]
433	16:33:47	70,60	487	16:34:41	66,94	541	16:35:35	78,24	595	16:36:29	66,31
434	16:33:48	68,82	488	16:34:42	66,19	542	16:35:36	76,31	596	16:36:30	66,40
435	16:33:49	71,33	489	16:34:43	73,19	543	16:35:37	77,51	597	16:36:31	66,42
436	16:33:50	70,01	490	16:34:44	69,80	544	16:35:38	73,66	598	16:36:32	66,67
437	16:33:51	66,23	491	16:34:45	71,54	545	16:35:39	72,04	599	16:36:33	66,75
438	16:33:52	65,77	492	16:34:46	71,50	546	16:35:40	68,86	600	16:36:34	66,70
439	16:33:53	66,05	493	16:34:47	71,64	547	16:35:41	67,82	601	16:36:35	66,86
440	16:33:54	66,15	494	16:34:48	72,37	548	16:35:42	67,49	602	16:36:36	67,00
441	16:33:55	65,87	495	16:34:49	71,83	549	16:35:43	68,03	603	16:36:37	67,39
442	16:33:56	65,83	496	16:34:50	71,57	550	16:35:44	67,43			
443	16:33:57	66,10	497	16:34:51	71,19	551	16:35:45	67,51			
444	16:33:58	69,60	498	16:34:52	70,18	552	16:35:46	70,83			
445	16:33:59	66,08	499	16:34:53	70,90	553	16:35:47	70,64			
446	16:34:00	66,31	500	16:34:54	73,91	554	16:35:48	69,35			
447	16:34:01	66,81	501	16:34:55	69,78	555	16:35:49	66,49			
448	16:34:02	65,63	502	16:34:56	72,40	556	16:35:50	66,41			
449	16:34:03	65,39	503	16:34:57	70,35	557	16:35:51	68,92			
450	16:34:04	64,97	504	16:34:58	70,33	558	16:35:52	67,28			
451	16:34:05	65,46	505	16:34:59	68,73	559	16:35:53	67,38			
452	16:34:06	67,11	506	16:35:00	69,25	560	16:35:54	66,26			
453	16:34:07	66,98	507	16:35:01	70,52	561	16:35:55	65,65			
454	16:34:08	66,85	508	16:35:02	70,49	562	16:35:56	65,69			
455	16:34:09	64,79	509	16:35:03	70,40	563	16:35:57	65,93			
456	16:34:10	65,36	510	16:35:04	70,09	564	16:35:58	65,90			
457	16:34:11	65,20	511	16:35:05	69,92	565	16:35:59	66,39			
458	16:34:12	64,93	512	16:35:06	70,59	566	16:36:00	66,40			
459	16:34:13	64,44	513	16:35:07	68,82	567	16:36:01	66,90			
460	16:34:14	64,34	514	16:35:08	72,32	568	16:36:02	66,90			
461	16:34:15	64,79	515	16:35:09	69,94	569	16:36:03	66,73			
462	16:34:16	69,09	516	16:35:10	67,56	570	16:36:04	69,52			
463	16:34:17	64,70	517	16:35:11	66,09	571	16:36:05	67,51			
464	16:34:18	64,59	518	16:35:12	64,27	572	16:36:06	67,17			
465	16:34:19	64,54	519	16:35:13	65,35	573	16:36:07	66,66			
466	16:34:20	64,89	520	16:35:14	65,54	574	16:36:08	66,78			
467	16:34:21	65,01	521	16:35:15	72,88	575	16:36:09	67,05			
468	16:34:22	64,87	522	16:35:16	66,16	576	16:36:10	66,47			
469	16:34:23	64,90	523	16:35:17	64,86	577	16:36:11	66,68			
470	16:34:24	65,15	524	16:35:18	65,34	578	16:36:12	66,97			
471	16:34:25	65,06	525	16:35:19	65,48	579	16:36:13	66,80			
472	16:34:26	64,75	526	16:35:20	72,81	580	16:36:14	67,42			
473	16:34:27	64,74	527	16:35:21	68,34	581	16:36:15	66,94			
474	16:34:28	64,64	528	16:35:22	66,91	582	16:36:16	66,46			
475	16:34:29	65,19	529	16:35:23	69,04	583	16:36:17	66,30			
476	16:34:30	64,87	530	16:35:24	70,47	584	16:36:18	66,60			
477	16:34:31	65,23	531	16:35:25	73,52	585	16:36:19	68,03			
478	16:34:32	66,17	532	16:35:26	75,47	586	16:36:20	70,78			
479	16:34:33	65,56	533	16:35:27	76,44	587	16:36:21	68,46			
480	16:34:34	65,04	534	16:35:28	76,56	588	16:36:22	68,14			
481	16:34:35	65,11	535	16:35:29	79,46	589	16:36:23	67,34			
482	16:34:36	65,25	536	16:35:30	78,34	590	16:36:24	66,40			
483	16:34:37	65,31	537	16:35:31	79,45	591	16:36:25	70,99			
484	16:34:38	82,67	538	16:35:32	78,71	592	16:36:26	66,74			
485	16:34:39	72,93	539	16:35:33	79,07	593	16:36:27	68,22			
486	16:34:40	66,44	540	16:35:34	79,06	594	16:36:28	68,79			