

Data: 09/12/2022
Empresa avaliada: Fassina

Empresa avaliadora: RMX Engenharia
Realizado por: Rodrigo K C Magário

Pontos de medição

Evento	Nome	L [dB] Aeq	L [dB] AFmax	L [dB] Cpeak
1	Ensaio02	57,90	71,83	97,61

Calibração de laboratório

Sonômetro: CRS0692/2022 16/02/2022
Calibrador de áudio: CRS0693/2022

Observações

Ponto 2 - Divisa da Empresa

Rodrigo K C Magário
Registro: 5069689512

Configurações

Evento: 1	Tarefa: Ensaio02
Tempo de amostragem [s]: 1	Duração: 00:10:02
Hora de início: 16:05:22	Tempo em pausa: 00:00:00
Hora de término: 16:15:23	Análise de oitavas: 1/3

Verificação de campo @ 1kHz

Pré verificação [dB]: 114,00 (09/12/2022 16:00)
Pós verificação [dB]: 113,87 (09/12/2022 16:15)
Desvio [dB]: 00,13

Resultados

L [dB]: 78,34 Z _{eq}	L [dB]: 106,14 Z _E	L [dB]: 103,24 Z _{peak}
L [dB]: 71,72 C _{eq}	L [dB]: 99,52 C _E	L [dB]: 97,61 C _{peak}
L [dB]: 57,90 A _{eq}	L [dB]: 85,69 A _E	L [dB]: 88,48 A _{peak}

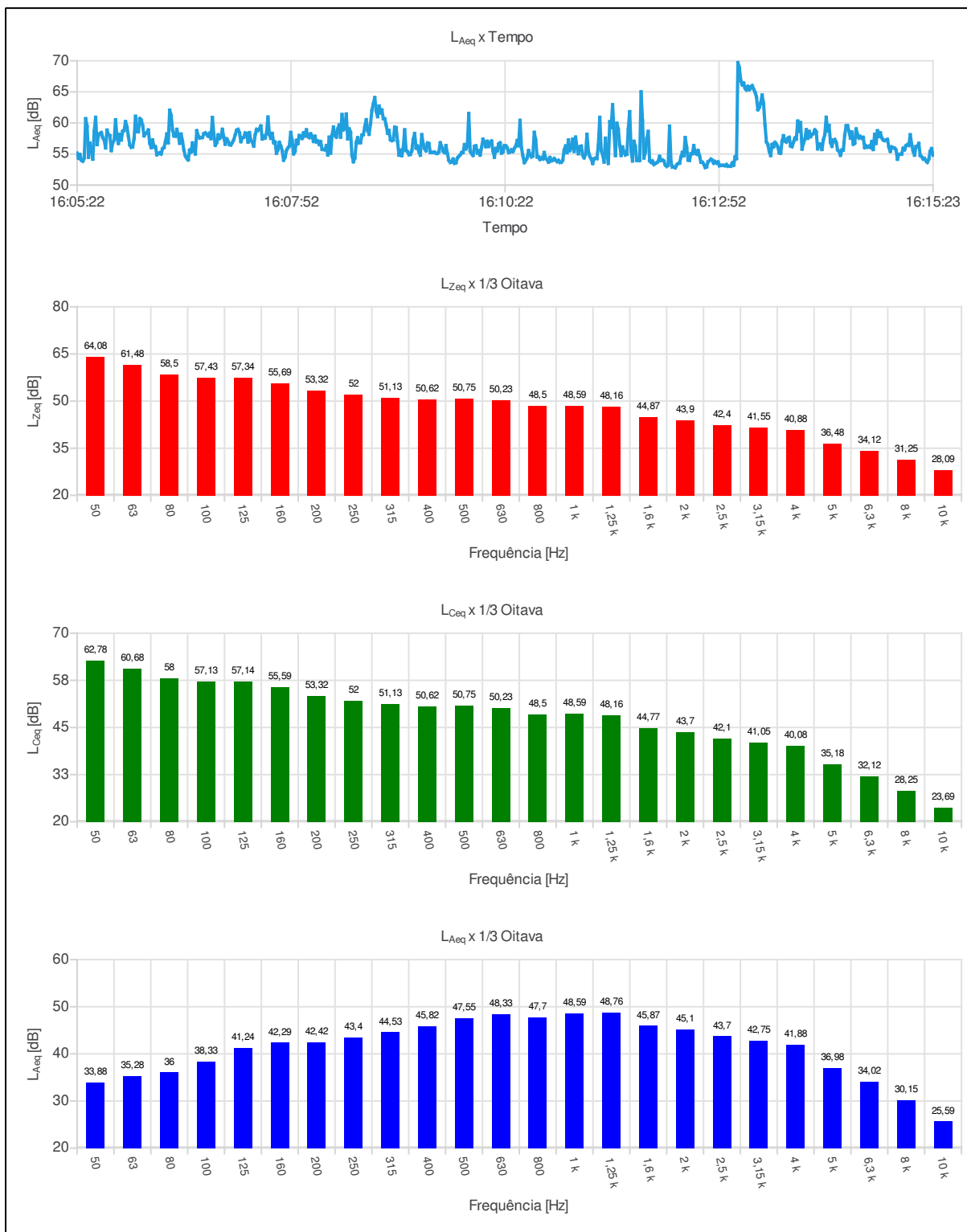
Máx/Min

L [dB]: 64,02 Z _{Imin}	L [dB]: 97,97 Z _{Imax}	L [dB]: 68,13 Z _{Fmin}	L [dB]: 95,66 Z _{Fmax}	L [dB]: 69,99 Z _{Smin}	L [dB]: 89,82 Z _{Smax}
L [dB]: 61,87 C _{Imin}	L [dB]: 90,67 C _{Imax}	L [dB]: 64,97 C _{Fmin}	L [dB]: 87,01 C _{Fmax}	L [dB]: 66,82 C _{Smin}	L [dB]: 80,87 C _{Smax}
L [dB]: 51,26 A _{Imin}	L [dB]: 75,06 A _{Imax}	L [dB]: 52,11 A _{Fmin}	L [dB]: 71,83 A _{Fmax}	L [dB]: 52,88 A _{Smin}	L [dB]: 68,85 A _{Smax}

Estatísticos

Ponderação em frequência: A				
Ponderação de tempo: Rápida (F)				
L [dB]: 63,15 05	L [dB]: 59,94 10	L [dB]: 56,83 50	L [dB]: 51,88 90	L [dB]: 50,94 95

Gráficos



Ind	D/H	L _{Aeq,1s} [dB]	Ind	D/H	L _{Aeq,1s} [dB]	Ind	D/H	L _{Aeq,1s} [dB]	Ind	D/H	L _{Aeq,1s} [dB]
001	16:05:22	55,15	055	16:06:16	56,13	109	16:07:10	56,46	163	16:08:04	57,88
002	16:05:23	54,31	056	16:06:17	56,19	110	16:07:11	56,86	164	16:08:05	57,64
003	16:05:24	54,92	057	16:06:18	54,88	111	16:07:12	57,32	165	16:08:06	58,25
004	16:05:25	54,00	058	16:06:19	55,07	112	16:07:13	58,09	166	16:08:07	57,80
005	16:05:26	53,84	059	16:06:20	55,19	113	16:07:14	58,83	167	16:08:08	57,02
006	16:05:27	54,37	060	16:06:21	55,00	114	16:07:15	58,96	168	16:08:09	57,86
007	16:05:28	60,68	061	16:06:22	55,87	115	16:07:16	58,41	169	16:08:10	56,95
008	16:05:29	59,47	062	16:06:23	56,03	116	16:07:17	56,99	170	16:08:11	57,07
009	16:05:30	54,48	063	16:06:24	56,99	117	16:07:18	57,59	171	16:08:12	56,54
010	16:05:31	56,74	064	16:06:25	58,23	118	16:07:19	57,71	172	16:08:13	57,00
011	16:05:32	55,58	065	16:06:26	56,80	119	16:07:20	58,39	173	16:08:14	55,75
012	16:05:33	54,17	066	16:06:27	62,05	120	16:07:21	58,30	174	16:08:15	55,70
013	16:05:34	58,64	067	16:06:28	61,22	121	16:07:22	56,91	175	16:08:16	55,68
014	16:05:35	60,91	068	16:06:29	58,86	122	16:07:23	58,44	176	16:08:17	56,35
015	16:05:36	56,51	069	16:06:30	57,91	123	16:07:24	57,21	177	16:08:18	54,85
016	16:05:37	58,02	070	16:06:31	57,87	124	16:07:25	56,89	178	16:08:19	57,71
017	16:05:38	58,30	071	16:06:32	58,97	125	16:07:26	56,27	179	16:08:20	55,14
018	16:05:39	58,45	072	16:06:33	58,09	126	16:07:27	58,07	180	16:08:21	58,03
019	16:05:40	57,65	073	16:06:34	56,73	127	16:07:28	58,97	181	16:08:22	59,34
020	16:05:41	57,22	074	16:06:35	58,21	128	16:07:29	58,81	182	16:08:23	58,03
021	16:05:42	55,99	075	16:06:36	57,06	129	16:07:30	59,08	183	16:08:24	57,72
022	16:05:43	58,85	076	16:06:37	55,60	130	16:07:31	59,52	184	16:08:25	59,05
023	16:05:44	58,13	077	16:06:38	54,70	131	16:07:32	57,43	185	16:08:26	59,67
024	16:05:45	57,98	078	16:06:39	54,31	132	16:07:33	57,86	186	16:08:27	57,71
025	16:05:46	55,55	079	16:06:40	54,05	133	16:07:34	57,57	187	16:08:28	61,35
026	16:05:47	56,77	080	16:06:41	55,63	134	16:07:35	58,40	188	16:08:29	58,90
027	16:05:48	57,27	081	16:06:42	55,32	135	16:07:36	60,95	189	16:08:30	59,17
028	16:05:49	60,51	082	16:06:43	56,78	136	16:07:37	58,18	190	16:08:31	61,44
029	16:05:50	57,63	083	16:06:44	55,67	137	16:07:38	57,53	191	16:08:32	57,45
030	16:05:51	56,71	084	16:06:45	55,01	138	16:07:39	58,32	192	16:08:33	59,05
031	16:05:52	58,17	085	16:06:46	58,75	139	16:07:40	56,82	193	16:08:34	58,51
032	16:05:53	57,26	086	16:06:47	57,97	140	16:07:41	56,93	194	16:08:35	54,76
033	16:05:54	58,68	087	16:06:48	57,59	141	16:07:42	55,12	195	16:08:36	53,75
034	16:05:55	58,79	088	16:06:49	57,63	142	16:07:43	55,69	196	16:08:37	54,32
035	16:05:56	60,22	089	16:06:50	57,66	143	16:07:44	56,88	197	16:08:38	56,87
036	16:05:57	59,38	090	16:06:51	58,28	144	16:07:45	56,31	198	16:08:39	57,63
037	16:05:58	57,83	091	16:06:52	58,40	145	16:07:46	55,53	199	16:08:40	56,82
038	16:05:59	56,43	092	16:06:53	58,15	146	16:07:47	54,01	200	16:08:41	56,83
039	16:06:00	56,08	093	16:06:54	57,87	147	16:07:48	54,46	201	16:08:42	58,05
040	16:06:01	56,14	094	16:06:55	58,35	148	16:07:49	55,55	202	16:08:43	58,12
041	16:06:02	57,46	095	16:06:56	57,48	149	16:07:50	55,97	203	16:08:44	59,40
042	16:06:03	61,07	096	16:06:57	60,89	150	16:07:51	56,28	204	16:08:45	60,52
043	16:06:04	58,62	097	16:06:58	58,11	151	16:07:52	58,47	205	16:08:46	58,79
044	16:06:05	58,57	098	16:06:59	56,41	152	16:07:53	57,19	206	16:08:47	58,18
045	16:06:06	60,70	099	16:07:00	56,79	153	16:07:54	55,02	207	16:08:48	59,85
046	16:06:07	60,48	100	16:07:01	58,08	154	16:07:55	55,41	208	16:08:49	62,06
047	16:06:08	59,63	101	16:07:02	57,50	155	16:07:56	57,20	209	16:08:50	63,10
048	16:06:09	57,93	102	16:07:03	57,79	156	16:07:57	56,67	210	16:08:51	64,08
049	16:06:10	58,27	103	16:07:04	58,98	157	16:07:58	57,98	211	16:08:52	61,90
050	16:06:11	58,44	104	16:07:05	57,68	158	16:07:59	57,92	212	16:08:53	61,02
051	16:06:12	58,87	105	16:07:06	56,58	159	16:08:00	57,51	213	16:08:54	62,72
052	16:06:13	56,72	106	16:07:07	57,44	160	16:08:01	58,40	214	16:08:55	61,64
053	16:06:14	56,04	107	16:07:08	57,07	161	16:08:02	57,90	215	16:08:56	62,09
054	16:06:15	57,27	108	16:07:09	56,50	162	16:08:03	58,90	216	16:08:57	60,70

Ind	D/H	L _{Aeq,1s} [dB]	Ind	D/H	L _{Aeq,1s} [dB]	Ind	D/H	L _{Aeq,1s} [dB]	Ind	D/H	L _{Aeq,1s} [dB]
217	16:08:58	60,67	271	16:09:52	55,22	325	16:10:46	54,53	379	16:11:40	54,75
218	16:08:59	59,64	272	16:09:53	55,23	326	16:10:47	54,11	380	16:11:41	59,95
219	16:09:00	58,35	273	16:09:54	56,52	327	16:10:48	54,38	381	16:11:42	59,03
220	16:09:01	58,79	274	16:09:55	55,83	328	16:10:49	54,21	382	16:11:43	56,40
221	16:09:02	57,29	275	16:09:56	56,19	329	16:10:50	55,24	383	16:11:44	54,77
222	16:09:03	57,17	276	16:09:57	61,54	330	16:10:51	54,30	384	16:11:45	56,13
223	16:09:04	57,26	277	16:09:58	55,46	331	16:10:52	54,07	385	16:11:46	55,35
224	16:09:05	59,32	278	16:09:59	55,07	332	16:10:53	53,69	386	16:11:47	54,84
225	16:09:06	59,24	279	16:10:00	54,77	333	16:10:54	54,44	387	16:11:48	54,96
226	16:09:07	57,00	280	16:10:01	56,24	334	16:10:55	53,90	388	16:11:49	58,98
227	16:09:08	54,82	281	16:10:02	56,33	335	16:10:56	53,99	389	16:11:50	61,82
228	16:09:09	55,61	282	16:10:03	55,17	336	16:10:57	54,28	390	16:11:51	55,46
229	16:09:10	54,73	283	16:10:04	55,50	337	16:10:58	54,02	391	16:11:52	53,88
230	16:09:11	55,98	284	16:10:05	54,83	338	16:10:59	53,78	392	16:11:53	57,05
231	16:09:12	58,90	285	16:10:06	56,05	339	16:11:00	53,98	393	16:11:54	56,21
232	16:09:13	55,56	286	16:10:07	57,38	340	16:11:01	53,65	394	16:11:55	53,96
233	16:09:14	55,40	287	16:10:08	56,88	341	16:11:02	53,68	395	16:11:56	54,22
234	16:09:15	54,89	288	16:10:09	56,18	342	16:11:03	54,01	396	16:11:57	53,96
235	16:09:16	54,94	289	16:10:10	57,05	343	16:11:04	55,66	397	16:11:58	65,01
236	16:09:17	55,50	290	16:10:11	56,22	344	16:11:05	56,30	398	16:11:59	60,36
237	16:09:18	57,36	291	16:10:12	56,77	345	16:11:06	55,22	399	16:12:00	54,36
238	16:09:19	58,31	292	16:10:13	57,09	346	16:11:07	57,26	400	16:12:01	55,33
239	16:09:20	55,95	293	16:10:14	55,53	347	16:11:08	55,55	401	16:12:02	57,49
240	16:09:21	56,28	294	16:10:15	54,48	348	16:11:09	55,95	402	16:12:03	58,63
241	16:09:22	55,36	295	16:10:16	55,89	349	16:11:10	57,40	403	16:12:04	53,92
242	16:09:23	54,81	296	16:10:17	55,49	350	16:11:11	55,42	404	16:12:05	53,66
243	16:09:24	58,11	297	16:10:18	56,62	351	16:11:12	57,72	405	16:12:06	53,89
244	16:09:25	56,63	298	16:10:19	56,80	352	16:11:13	56,08	406	16:12:07	53,31
245	16:09:26	55,86	299	16:10:20	55,15	353	16:11:14	55,05	407	16:12:08	53,49
246	16:09:27	55,51	300	16:10:21	55,33	354	16:11:15	56,16	408	16:12:09	53,60
247	16:09:28	56,78	301	16:10:22	56,35	355	16:11:16	56,27	409	16:12:10	53,84
248	16:09:29	56,68	302	16:10:23	56,31	356	16:11:17	54,81	410	16:12:11	54,62
249	16:09:30	55,26	303	16:10:24	55,99	357	16:11:18	54,39	411	16:12:12	53,96
250	16:09:31	55,25	304	16:10:25	55,24	358	16:11:19	54,95	412	16:12:13	54,03
251	16:09:32	55,27	305	16:10:26	55,33	359	16:11:20	58,18	413	16:12:14	53,88
252	16:09:33	55,29	306	16:10:27	55,68	360	16:11:21	55,49	414	16:12:15	53,23
253	16:09:34	55,13	307	16:10:28	55,39	361	16:11:22	54,61	415	16:12:16	53,02
254	16:09:35	55,11	308	16:10:29	55,89	362	16:11:23	54,19	416	16:12:17	53,18
255	16:09:36	55,32	309	16:10:30	56,28	363	16:11:24	53,48	417	16:12:18	59,49
256	16:09:37	56,81	310	16:10:31	57,17	364	16:11:25	54,22	418	16:12:19	53,73
257	16:09:38	56,18	311	16:10:32	56,34	365	16:11:26	54,32	419	16:12:20	52,90
258	16:09:39	55,47	312	16:10:33	60,42	366	16:11:27	54,26	420	16:12:21	52,90
259	16:09:40	55,23	313	16:10:34	56,03	367	16:11:28	56,45	421	16:12:22	52,78
260	16:09:41	56,35	314	16:10:35	54,70	368	16:11:29	60,91	422	16:12:23	53,24
261	16:09:42	55,05	315	16:10:36	53,62	369	16:11:30	55,55	423	16:12:24	53,45
262	16:09:43	53,98	316	16:10:37	53,96	370	16:11:31	54,91	424	16:12:25	53,52
263	16:09:44	53,65	317	16:10:38	54,40	371	16:11:32	53,71	425	16:12:26	54,53
264	16:09:45	53,72	318	16:10:39	55,56	372	16:11:33	57,55	426	16:12:27	55,27
265	16:09:46	54,19	319	16:10:40	54,94	373	16:11:34	55,18	427	16:12:28	54,73
266	16:09:47	53,50	320	16:10:41	54,53	374	16:11:35	53,49	428	16:12:29	57,65
267	16:09:48	53,58	321	16:10:42	54,67	375	16:11:36	60,20	429	16:12:30	56,14
268	16:09:49	54,34	322	16:10:43	58,49	376	16:11:37	59,25	430	16:12:31	54,02
269	16:09:50	54,63	323	16:10:44	57,28	377	16:11:38	62,94	431	16:12:32	53,97
270	16:09:51	54,87	324	16:10:45	54,52	378	16:11:39	58,55	432	16:12:33	55,04

Ind	D/H	L _{Aeq,1s} [dB]	Ind	D/H	L _{Aeq,1s} [dB]	Ind	D/H	L _{Aeq,1s} [dB]	Ind	D/H	L _{Aeq,1s} [dB]
433	16:12:34	55,05	487	16:13:28	55,43	541	16:14:22	59,55	595	16:15:16	54,20
434	16:12:35	56,35	488	16:13:29	54,75	542	16:14:23	59,55	596	16:15:17	54,28
435	16:12:36	55,18	489	16:13:30	56,55	543	16:14:24	58,64	597	16:15:18	53,93
436	16:12:37	54,98	490	16:13:31	56,14	544	16:14:25	57,55	598	16:15:19	53,66
437	16:12:38	55,56	491	16:13:32	56,87	545	16:14:26	58,53	599	16:15:20	54,16
438	16:12:39	54,76	492	16:13:33	56,61	546	16:14:27	56,58	600	16:15:21	55,44
439	16:12:40	53,69	493	16:13:34	56,14	547	16:14:28	56,74	601	16:15:22	55,87
440	16:12:41	53,67	494	16:13:35	55,19	548	16:14:29	59,04	602	16:15:23	54,79
441	16:12:42	53,37	495	16:13:36	55,12	549	16:14:30	58,16			
442	16:12:43	52,82	496	16:13:37	57,07	550	16:14:31	57,57			
443	16:12:44	52,91	497	16:13:38	57,94	551	16:14:32	57,84			
444	16:12:45	53,74	498	16:13:39	57,11	552	16:14:33	57,55			
445	16:12:46	53,91	499	16:13:40	56,92	553	16:14:34	57,68			
446	16:12:47	54,17	500	16:13:41	57,51	554	16:14:35	56,03			
447	16:12:48	54,02	501	16:13:42	57,68	555	16:14:36	56,32			
448	16:12:49	53,52	502	16:13:43	56,29	556	16:14:37	56,12			
449	16:12:50	53,78	503	16:13:44	56,18	557	16:14:38	56,25			
450	16:12:51	53,55	504	16:13:45	56,88	558	16:14:39	56,04			
451	16:12:52	53,74	505	16:13:46	57,57	559	16:14:40	57,01			
452	16:12:53	53,11	506	16:13:47	57,39	560	16:14:41	55,72			
453	16:12:54	53,19	507	16:13:48	60,30	561	16:14:42	58,18			
454	16:12:55	53,15	508	16:13:49	58,66	562	16:14:43	56,71			
455	16:12:56	53,18	509	16:13:50	60,05	563	16:14:44	58,74			
456	16:12:57	53,12	510	16:13:51	55,79	564	16:14:45	57,83			
457	16:12:58	53,30	511	16:13:52	56,72	565	16:14:46	58,41			
458	16:12:59	53,04	512	16:13:53	57,38	566	16:14:47	57,63			
459	16:13:00	53,05	513	16:13:54	58,91	567	16:14:48	57,28			
460	16:13:01	53,03	514	16:13:55	57,53	568	16:14:49	57,17			
461	16:13:02	53,56	515	16:13:56	58,64	569	16:14:50	57,25			
462	16:13:03	53,19	516	16:13:57	57,79	570	16:14:51	57,36			
463	16:13:04	54,55	517	16:13:58	58,13	571	16:14:52	56,09			
464	16:13:05	54,26	518	16:13:59	58,30	572	16:14:53	55,42			
465	16:13:06	69,71	519	16:14:00	58,89	573	16:14:54	56,14			
466	16:13:07	68,93	520	16:14:01	58,58	574	16:14:55	56,01			
467	16:13:08	66,83	521	16:14:02	55,83	575	16:14:56	55,95			
468	16:13:09	66,14	522	16:14:03	56,60	576	16:14:57	55,66			
469	16:13:10	66,43	523	16:14:04	56,59	577	16:14:58	54,16			
470	16:13:11	65,60	524	16:14:05	55,73	578	16:14:59	54,92			
471	16:13:12	65,32	525	16:14:06	57,27	579	16:15:00	54,98			
472	16:13:13	65,89	526	16:14:07	58,13	580	16:15:01	54,98			
473	16:13:14	65,36	527	16:14:08	60,92	581	16:15:02	55,93			
474	16:13:15	65,71	528	16:14:09	58,70	582	16:15:03	55,68			
475	16:13:16	66,00	529	16:14:10	59,61	583	16:15:04	56,34			
476	16:13:17	65,47	530	16:14:11	56,86	584	16:15:05	56,50			
477	16:13:18	64,96	531	16:14:12	56,24	585	16:15:06	56,38			
478	16:13:19	64,20	532	16:14:13	57,24	586	16:15:07	58,10			
479	16:13:20	62,14	533	16:14:14	57,34	587	16:15:08	56,56			
480	16:13:21	62,48	534	16:14:15	56,88	588	16:15:09	55,48			
481	16:13:22	63,23	535	16:14:16	55,68	589	16:15:10	54,82			
482	16:13:23	64,49	536	16:14:17	55,41	590	16:15:11	56,19			
483	16:13:24	63,12	537	16:14:18	54,80	591	16:15:12	56,22			
484	16:13:25	59,71	538	16:14:19	55,64	592	16:15:13	56,71			
485	16:13:26	56,95	539	16:14:20	55,62	593	16:15:14	54,76			
486	16:13:27	56,53	540	16:14:21	58,07	594	16:15:15	54,57			