

Data: 09/12/2022
Empresa avaliada: Fassina

Empresa avaliadora: RMX Engenharia
Realizado por: Rodrigo K C Magário

Pontos de medição

Evento	Nome	L [dB] Aeq	L [dB] AFmax	L [dB] Cpeak
1	Ensaio01	55,51	70,92	88,65

Calibração de laboratório

Sonômetro: CRS0692/2022 16/02/2022
Calibrador de áudio: CRS0693/2022

Observações

Ponto 1 - Fundos da Empresa - Lado Externo

Rodrigo K C Magário
Registro: 5069689512

Configurações

Evento: 1	Tarefa: Ensaio01
Tempo de amostragem [s]: 1	Duração: 00:10:04
Hora de início: 15:47:34	Tempo em pausa: 00:00:00
Hora de término: 15:57:37	Análise de oitavas: 1/3

Verificação de campo @ 1kHz

Pré verificação [dB]: 114,00 (09/12/2022 15:46)
 Pós verificação [dB]: 114,04 (09/12/2022 15:57)
 Desvio [dB]: -0,04

Resultados

L [dB]: 74,81 <small>Z_{eq}</small>	L [dB]: 102,62 <small>Z_E</small>	L [dB]: 91,93 <small>Z_{peak}</small>
L [dB]: 71,27 <small>C_{eq}</small>	L [dB]: 99,08 <small>C_E</small>	L [dB]: 88,65 <small>C_{peak}</small>
L [dB]: 55,51 <small>A_{eq}</small>	L [dB]: 83,32 <small>A_E</small>	L [dB]: 86,54 <small>A_{peak}</small>

Máx/Min

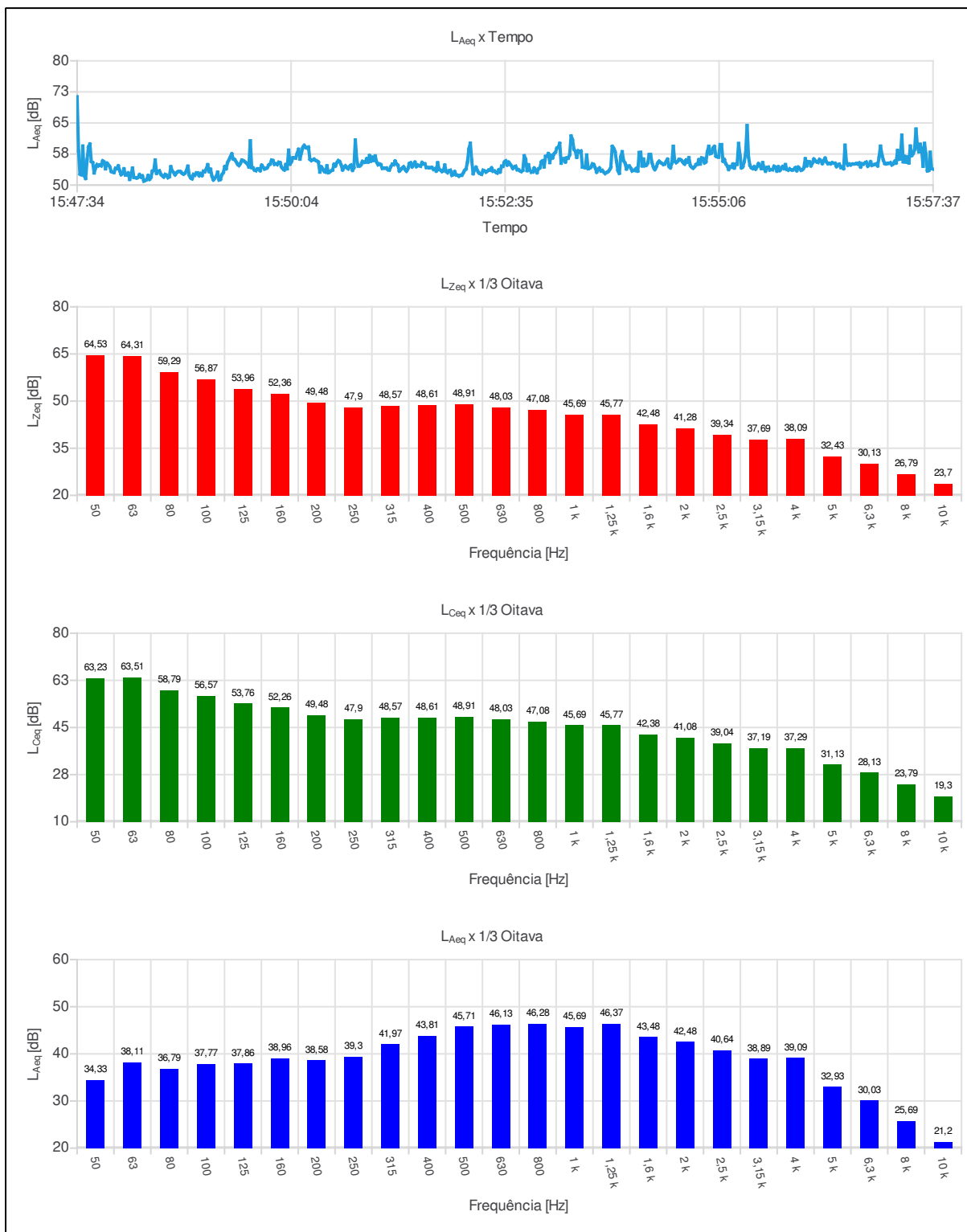
L [dB]: 64,29 <small>Z_{lmin}</small>	L [dB]: 89,14 <small>Z_{lmax}</small>	L [dB]: 67,72 <small>Z_{Fmin}</small>	L [dB]: 86,53 <small>Z_{Fmax}</small>	L [dB]: 69,71 <small>Z_{Smin}</small>	L [dB]: 81,97 <small>Z_{Smax}</small>
L [dB]: 62,41 <small>C_{lmin}</small>	L [dB]: 81,16 <small>C_{lmax}</small>	L [dB]: 64,95 <small>C_{Fmin}</small>	L [dB]: 78,57 <small>C_{Fmax}</small>	L [dB]: 67,04 <small>C_{Smin}</small>	L [dB]: 75,89 <small>C_{Smax}</small>
L [dB]: 49,04 <small>A_{lmin}</small>	L [dB]: 72,77 <small>A_{lmax}</small>	L [dB]: 50,16 <small>A_{Fmin}</small>	L [dB]: 70,92 <small>A_{Fmax}</small>	L [dB]: 51,12 <small>A_{Smin}</small>	L [dB]: 70,95 <small>A_{Smax}</small>

Estatísticos

Ponderação em frequência: A
 Ponderação de tempo: Rápida (F)

L [dB]: 59,72 <small>05</small>	L [dB]: 59,04 <small>10</small>	L [dB]: 54,13 <small>50</small>	L [dB]: 50,83 <small>90</small>	L [dB]: 50,41 <small>95</small>
------------------------------------	------------------------------------	------------------------------------	------------------------------------	------------------------------------

Gráficos



Ind	D/H	L _{Aeq,1s} [dB]	Ind	D/H	L _{Aeq,1s} [dB]	Ind	D/H	L _{Aeq,1s} [dB]	Ind	D/H	L _{Aeq,1s} [dB]
001	15:47:34	71,34	055	15:48:28	53,51	109	15:49:22	56,86	163	15:50:16	58,99
002	15:47:35	58,19	056	15:48:29	56,04	110	15:49:23	57,53	164	15:50:17	59,18
003	15:47:36	52,68	057	15:48:30	52,83	111	15:49:24	56,28	165	15:50:18	56,22
004	15:47:37	52,49	058	15:48:31	53,30	112	15:49:25	56,16	166	15:50:19	55,93
005	15:47:38	59,41	059	15:48:32	53,43	113	15:49:26	55,65	167	15:50:20	56,11
006	15:47:39	52,29	060	15:48:33	52,61	114	15:49:27	55,05	168	15:50:21	56,24
007	15:47:40	51,59	061	15:48:34	52,25	115	15:49:28	54,72	169	15:50:22	55,96
008	15:47:41	56,08	062	15:48:35	51,95	116	15:49:29	55,22	170	15:50:23	55,81
009	15:47:42	59,19	063	15:48:36	52,56	117	15:49:30	56,00	171	15:50:24	55,51
010	15:47:43	59,90	064	15:48:37	52,38	118	15:49:31	55,91	172	15:50:25	53,15
011	15:47:44	55,68	065	15:48:38	51,79	119	15:49:32	55,67	173	15:50:26	54,41
012	15:47:45	55,42	066	15:48:39	52,01	120	15:49:33	55,39	174	15:50:27	53,92
013	15:47:46	52,94	067	15:48:40	54,43	121	15:49:34	55,06	175	15:50:28	53,35
014	15:47:47	54,12	068	15:48:41	53,42	122	15:49:35	54,38	176	15:50:29	53,14
015	15:47:48	54,94	069	15:48:42	53,02	123	15:49:36	60,67	177	15:50:30	54,65
016	15:47:49	54,65	070	15:48:43	52,47	124	15:49:37	54,20	178	15:50:31	53,00
017	15:47:50	54,85	071	15:48:44	52,93	125	15:49:38	54,13	179	15:50:32	53,19
018	15:47:51	54,65	072	15:48:45	53,23	126	15:49:39	53,61	180	15:50:33	53,46
019	15:47:52	55,84	073	15:48:46	53,29	127	15:49:40	53,49	181	15:50:34	53,62
020	15:47:53	55,54	074	15:48:47	53,21	128	15:49:41	53,90	182	15:50:35	55,01
021	15:47:54	53,94	075	15:48:48	52,84	129	15:49:42	53,91	183	15:50:36	54,61
022	15:47:55	55,29	076	15:48:49	52,65	130	15:49:43	53,46	184	15:50:37	55,41
023	15:47:56	54,91	077	15:48:50	52,87	131	15:49:44	54,80	185	15:50:38	55,90
024	15:47:57	54,42	078	15:48:51	53,50	132	15:49:45	54,35	186	15:50:39	55,66
025	15:47:58	53,32	079	15:48:52	54,56	133	15:49:46	53,90	187	15:50:40	54,87
026	15:47:59	53,14	080	15:48:53	52,38	134	15:49:47	53,99	188	15:50:41	53,65
027	15:48:00	53,03	081	15:48:54	51,74	135	15:49:48	54,23	189	15:50:42	54,21
028	15:48:01	54,04	082	15:48:55	51,51	136	15:49:49	54,84	190	15:50:43	54,65
029	15:48:02	53,98	083	15:48:56	52,58	137	15:49:50	55,06	191	15:50:44	54,22
030	15:48:03	54,64	084	15:48:57	52,39	138	15:49:51	56,02	192	15:50:45	53,92
031	15:48:04	53,48	085	15:48:58	52,92	139	15:49:52	55,90	193	15:50:46	54,54
032	15:48:05	52,52	086	15:48:59	52,91	140	15:49:53	55,00	194	15:50:47	54,83
033	15:48:06	52,88	087	15:49:00	52,26	141	15:49:54	55,13	195	15:50:48	53,56
034	15:48:07	53,93	088	15:49:01	52,77	142	15:49:55	54,95	196	15:50:49	54,16
035	15:48:08	52,43	089	15:49:02	52,29	143	15:49:56	55,50	197	15:50:50	60,87
036	15:48:09	52,47	090	15:49:03	53,35	144	15:49:57	55,40	198	15:50:51	56,09
037	15:48:10	52,93	091	15:49:04	53,23	145	15:49:58	54,37	199	15:50:52	54,61
038	15:48:11	51,38	092	15:49:05	53,90	146	15:49:59	53,93	200	15:50:53	54,61
039	15:48:12	52,49	093	15:49:06	54,92	147	15:50:00	53,65	201	15:50:54	54,90
040	15:48:13	54,09	094	15:49:07	53,26	148	15:50:01	54,96	202	15:50:55	55,71
041	15:48:14	51,83	095	15:49:08	53,83	149	15:50:02	53,93	203	15:50:56	55,49
042	15:48:15	51,77	096	15:49:09	52,13	150	15:50:03	58,43	204	15:50:57	55,55
043	15:48:16	51,72	097	15:49:10	51,25	151	15:50:04	55,07	205	15:50:58	56,35
044	15:48:17	51,90	098	15:49:11	51,65	152	15:50:05	55,62	206	15:50:59	55,54
045	15:48:18	52,52	099	15:49:12	52,11	153	15:50:06	56,58	207	15:51:00	57,12
046	15:48:19	51,95	100	15:49:13	53,11	154	15:50:07	56,58	208	15:51:01	55,79
047	15:48:20	52,21	101	15:49:14	51,22	155	15:50:08	56,51	209	15:51:02	56,71
048	15:48:21	50,96	102	15:49:15	51,39	156	15:50:09	57,61	210	15:51:03	55,98
049	15:48:22	51,11	103	15:49:16	52,50	157	15:50:10	58,64	211	15:51:04	57,02
050	15:48:23	51,35	104	15:49:17	53,02	158	15:50:11	56,27	212	15:51:05	55,57
051	15:48:24	52,31	105	15:49:18	54,45	159	15:50:12	57,78	213	15:51:06	54,91
052	15:48:25	51,38	106	15:49:19	53,93	160	15:50:13	59,06	214	15:51:07	55,08
053	15:48:26	51,83	107	15:49:20	55,44	161	15:50:14	59,58	215	15:51:08	54,92
054	15:48:27	53,36	108	15:49:21	56,11	162	15:50:15	59,07	216	15:51:09	54,03

Ind	D/H	L _{Aeq,1s} [dB]	Ind	D/H	L _{Aeq,1s} [dB]	Ind	D/H	L _{Aeq,1s} [dB]	Ind	D/H	L _{Aeq,1s} [dB]
217	15:51:10	54,10	271	15:52:04	52,34	325	15:52:58	52,98	379	15:53:52	58,89
218	15:51:11	54,07	272	15:52:05	52,38	326	15:52:59	53,91	380	15:53:53	58,08
219	15:51:12	54,11	273	15:52:06	52,90	327	15:53:00	54,15	381	15:53:54	55,77
220	15:51:13	53,71	274	15:52:07	53,54	328	15:53:01	55,57	382	15:53:55	53,50
221	15:51:14	53,63	275	15:52:08	53,88	329	15:53:02	55,86	383	15:53:56	52,85
222	15:51:15	54,45	276	15:52:09	55,57	330	15:53:03	54,39	384	15:53:57	56,83
223	15:51:16	55,02	277	15:52:10	58,69	331	15:53:04	56,92	385	15:53:58	58,05
224	15:51:17	54,93	278	15:52:11	60,10	332	15:53:05	57,02	386	15:53:59	55,93
225	15:51:18	55,79	279	15:52:12	55,92	333	15:53:06	57,60	387	15:54:00	55,32
226	15:51:19	55,16	280	15:52:13	52,75	334	15:53:07	55,45	388	15:54:01	53,88
227	15:51:20	54,77	281	15:52:14	53,70	335	15:53:08	57,13	389	15:54:02	54,56
228	15:51:21	53,38	282	15:52:15	54,31	336	15:53:09	56,57	390	15:54:03	54,59
229	15:51:22	53,70	283	15:52:16	53,53	337	15:53:10	57,54	391	15:54:04	54,12
230	15:51:23	54,09	284	15:52:17	52,98	338	15:53:11	57,93	392	15:54:05	53,40
231	15:51:24	54,42	285	15:52:18	52,75	339	15:53:12	58,91	393	15:54:06	53,57
232	15:51:25	53,81	286	15:52:19	52,60	340	15:53:13	59,19	394	15:54:07	53,53
233	15:51:26	53,36	287	15:52:20	53,58	341	15:53:14	60,08	395	15:54:08	54,02
234	15:51:27	53,91	288	15:52:21	53,41	342	15:53:15	55,29	396	15:54:09	53,37
235	15:51:28	55,18	289	15:52:22	53,14	343	15:53:16	56,33	397	15:54:10	57,86
236	15:51:29	55,39	290	15:52:23	53,36	344	15:53:17	56,38	398	15:54:11	57,90
237	15:51:30	54,40	291	15:52:24	53,63	345	15:53:18	55,56	399	15:54:12	54,63
238	15:51:31	54,95	292	15:52:25	53,61	346	15:53:19	56,57	400	15:54:13	56,28
239	15:51:32	55,53	293	15:52:26	54,14	347	15:53:20	56,50	401	15:54:14	54,66
240	15:51:33	54,46	294	15:52:27	53,35	348	15:53:21	57,35	402	15:54:15	54,79
241	15:51:34	54,83	295	15:52:28	53,39	349	15:53:22	61,86	403	15:54:16	55,33
242	15:51:35	54,69	296	15:52:29	53,10	350	15:53:23	60,96	404	15:54:17	57,35
243	15:51:36	54,57	297	15:52:30	52,91	351	15:53:24	58,68	405	15:54:18	57,38
244	15:51:37	55,45	298	15:52:31	53,67	352	15:53:25	58,15	406	15:54:19	55,42
245	15:51:38	55,14	299	15:52:32	53,15	353	15:53:26	56,70	407	15:54:20	54,34
246	15:51:39	55,12	300	15:52:33	54,55	354	15:53:27	58,28	408	15:54:21	53,75
247	15:51:40	54,25	301	15:52:34	54,53	355	15:53:28	58,04	409	15:54:22	54,35
248	15:51:41	54,24	302	15:52:35	55,54	356	15:53:29	58,22	410	15:54:23	55,28
249	15:51:42	54,17	303	15:52:36	55,85	357	15:53:30	54,35	411	15:54:24	55,76
250	15:51:43	54,23	304	15:52:37	54,84	358	15:53:31	54,28	412	15:54:25	55,46
251	15:51:44	54,23	305	15:52:38	55,52	359	15:53:32	54,21	413	15:54:26	55,23
252	15:51:45	53,79	306	15:52:39	55,08	360	15:53:33	57,25	414	15:54:27	54,99
253	15:51:46	53,94	307	15:52:40	54,61	361	15:53:34	53,96	415	15:54:28	55,09
254	15:51:47	53,38	308	15:52:41	54,00	362	15:53:35	54,08	416	15:54:29	55,72
255	15:51:48	55,39	309	15:52:42	54,38	363	15:53:36	54,35	417	15:54:30	56,25
256	15:51:49	53,79	310	15:52:43	54,54	364	15:53:37	55,11	418	15:54:31	54,50
257	15:51:50	53,60	311	15:52:44	53,71	365	15:53:38	54,94	419	15:54:32	54,16
258	15:51:51	53,28	312	15:52:45	53,70	366	15:53:39	54,17	420	15:54:33	55,37
259	15:51:52	53,47	313	15:52:46	53,42	367	15:53:40	53,12	421	15:54:34	59,37
260	15:51:53	54,82	314	15:52:47	53,29	368	15:53:41	53,67	422	15:54:35	55,77
261	15:51:54	53,33	315	15:52:48	53,56	369	15:53:42	54,12	423	15:54:36	55,43
262	15:51:55	53,00	316	15:52:49	57,07	370	15:53:43	53,41	424	15:54:37	55,70
263	15:51:56	53,45	317	15:52:50	56,23	371	15:53:44	53,52	425	15:54:38	56,18
264	15:51:57	53,58	318	15:52:51	53,49	372	15:53:45	53,13	426	15:54:39	56,15
265	15:51:58	52,37	319	15:52:52	54,90	373	15:53:46	52,79	427	15:54:40	55,88
266	15:51:59	52,60	320	15:52:53	53,62	374	15:53:47	53,05	428	15:54:41	55,40
267	15:52:00	53,25	321	15:52:54	53,12	375	15:53:48	53,22	429	15:54:42	55,08
268	15:52:01	52,46	322	15:52:55	53,16	376	15:53:49	53,64	430	15:54:43	56,04
269	15:52:02	52,37	323	15:52:56	54,11	377	15:53:50	54,30	431	15:54:44	55,56
270	15:52:03	52,16	324	15:52:57	53,53	378	15:53:51	59,34	432	15:54:45	56,60

Ind	D/H	L _{Aeq,1s} [dB]	Ind	D/H	L _{Aeq,1s} [dB]	Ind	D/H	L _{Aeq,1s} [dB]	Ind	D/H	L _{Aeq,1s} [dB]
433	15:54:46	54,77	487	15:55:40	54,26	541	15:56:34	53,95	595	15:57:28	59,85
434	15:54:47	54,32	488	15:55:41	54,33	542	15:56:35	59,62	596	15:57:29	58,63
435	15:54:48	54,08	489	15:55:42	53,62	543	15:56:36	55,49	597	15:57:30	54,54
436	15:54:49	54,41	490	15:55:43	53,73	544	15:56:37	54,80	598	15:57:31	60,06
437	15:54:50	54,94	491	15:55:44	53,70	545	15:56:38	55,06	599	15:57:32	57,50
438	15:54:51	55,01	492	15:55:45	54,54	546	15:56:39	54,88	600	15:57:33	53,42
439	15:54:52	56,12	493	15:55:46	54,26	547	15:56:40	55,06	601	15:57:34	53,54
440	15:54:53	55,09	494	15:55:47	53,38	548	15:56:41	55,10	602	15:57:35	57,91
441	15:54:54	56,56	495	15:55:48	54,42	549	15:56:42	55,10	603	15:57:36	53,97
442	15:54:55	56,43	496	15:55:49	53,52	550	15:56:43	55,20	604	15:57:37	53,85
443	15:54:56	55,36	497	15:55:50	53,93	551	15:56:44	55,08			
444	15:54:57	55,63	498	15:55:51	54,46	552	15:56:45	55,35			
445	15:54:58	58,00	499	15:55:52	53,98	553	15:56:46	54,37			
446	15:54:59	59,36	500	15:55:53	54,94	554	15:56:47	55,14			
447	15:55:00	57,58	501	15:55:54	53,77	555	15:56:48	55,07			
448	15:55:01	57,78	502	15:55:55	53,62	556	15:56:49	55,36			
449	15:55:02	58,94	503	15:55:56	53,91	557	15:56:50	55,55			
450	15:55:03	59,33	504	15:55:57	53,69	558	15:56:51	54,57			
451	15:55:04	57,01	505	15:55:58	53,64	559	15:56:52	54,93			
452	15:55:05	56,81	506	15:55:59	53,84	560	15:56:53	55,64			
453	15:55:06	56,77	507	15:56:00	54,20	561	15:56:54	54,76			
454	15:55:07	59,77	508	15:56:01	53,47	562	15:56:55	54,92			
455	15:55:08	59,77	509	15:56:02	54,33	563	15:56:56	54,98			
456	15:55:09	55,78	510	15:56:03	53,98	564	15:56:57	55,12			
457	15:55:10	56,16	511	15:56:04	53,59	565	15:56:58	54,63			
458	15:55:11	55,18	512	15:56:05	53,73	566	15:56:59	56,79			
459	15:55:12	54,63	513	15:56:06	54,19	567	15:57:00	59,40			
460	15:55:13	53,77	514	15:56:07	56,37	568	15:57:01	57,37			
461	15:55:14	54,44	515	15:56:08	54,65	569	15:57:02	56,02			
462	15:55:15	54,34	516	15:56:09	55,66	570	15:57:03	55,21			
463	15:55:16	55,07	517	15:56:10	55,60	571	15:57:04	55,12			
464	15:55:17	54,13	518	15:56:11	54,65	572	15:57:05	55,25			
465	15:55:18	55,04	519	15:56:12	55,29	573	15:57:06	55,25			
466	15:55:19	55,02	520	15:56:13	56,28	574	15:57:07	55,39			
467	15:55:20	60,04	521	15:56:14	55,91	575	15:57:08	54,88			
468	15:55:21	57,20	522	15:56:15	55,59	576	15:57:09	55,12			
469	15:55:22	54,16	523	15:56:16	55,47	577	15:57:10	55,73			
470	15:55:23	54,44	524	15:56:17	56,18	578	15:57:11	55,32			
471	15:55:24	55,69	525	15:56:18	55,83	579	15:57:12	58,36			
472	15:55:25	57,75	526	15:56:19	55,19	580	15:57:13	56,22			
473	15:55:26	64,37	527	15:56:20	55,93	581	15:57:14	56,29			
474	15:55:27	56,78	528	15:56:21	56,50	582	15:57:15	62,04			
475	15:55:28	54,77	529	15:56:22	55,56	583	15:57:16	55,62			
476	15:55:29	54,19	530	15:56:23	55,17	584	15:57:17	56,93			
477	15:55:30	53,99	531	15:56:24	55,24	585	15:57:18	55,56			
478	15:55:31	54,43	532	15:56:25	55,15	586	15:57:19	56,79			
479	15:55:32	53,85	533	15:56:26	55,39	587	15:57:20	55,34			
480	15:55:33	54,41	534	15:56:27	55,28	588	15:57:21	59,42			
481	15:55:34	55,17	535	15:56:28	55,25	589	15:57:22	57,14			
482	15:55:35	54,73	536	15:56:29	54,47	590	15:57:23	57,61			
483	15:55:36	53,99	537	15:56:30	54,93	591	15:57:24	58,55			
484	15:55:37	55,42	538	15:56:31	55,03	592	15:57:25	63,52			
485	15:55:38	54,04	539	15:56:32	54,25	593	15:57:26	59,28			
486	15:55:39	53,36	540	15:56:33	54,35	594	15:57:27	58,04			